

Mindi Mond

NEW YORK



RETAIL PRODUCTS LINESHEET

*Fall Winter 2025*



## CLARITY<sub>3</sub> COLLECTION

*Mindi Mond New York rewrites the concept of 'diamonds for daytime' with the CLARITY<sub>3</sub> collection: sophisticated jewels that enhance the captivating allure of natural diamonds.*

*Composed of a signature configuration of nine baguette and round-cut diamonds, the central motif is designed to maximise brilliance and sparkle, transforming classic silhouettes into showstopping statement pieces that defy convention.*

# CLARITY<sub>3</sub> COLLECTION

## *Earrings*

---



**CLARITY GOLD  
FRAMED STUDS**

*0.95 CTW  
CE-0014-YG  
RRP \$12,900*



**CLARITY GOLD  
FRAMED STUDS**

*0.95 CTW  
CE-0014-WG  
RRP \$12,900*



**CLARITY GOLD  
FRAMED STUDS**

*0.95 CTW  
CE-0014-RG  
RRP \$12,900*



**CLARITY GOLD  
FRAMED DROP EARRINGS**

*1.63 CTW  
CE-0010-YG  
RRP \$15,200*



**CLARITY GOLD  
FRAMED DROP EARRINGS**

*1.63 CTW  
CE-0010-WG  
RRP \$15,200*



**CLARITY GOLD  
FRAMED DROP EARRINGS**

*1.63 CTW  
CE-0010-RG  
RRP \$15,200*



**CLARITY MEGA GOLD  
FRAMED DROP EARRINGS**

*2.86 CTW  
CE-0048-YG  
RRP \$27,000*



**CLARITY MEGA GOLD  
FRAMED DROP EARRINGS**

*2.86 CTW  
CE-0048-WG  
RRP \$27,000*



**CLARITY MEGA GOLD  
FRAMED DROP EARRINGS**

*2.86 CTW  
CE-0048-RG  
RRP \$27,000*

*Carat weights are approximate and may vary slightly from piece to piece, reflecting the artisanal nature of our craftsmanship.*

*[info@mindimondny.com](mailto:info@mindimondny.com)*

# CLARITY<sub>3</sub> COLLECTION

## Earrings

---



### CLASSIC CLARITY HALO EARRINGS

3.00 CTW  
CE-0001-WG  
RRP \$28,000



### CLASSIC CLARITY HALO EARRINGS

3.00 CTW  
CE-0001-YG  
RRP \$28,000



### CLARITY MEGA HALO EARRINGS

4.00 CTW  
CE-M001-YG  
RRP \$32,000



### CLARITY MEGA HALO EARRINGS

4.00 CTW  
CE-M001-YG  
RRP \$32,000



### CLARITY MEGA EMERALD HALO EARRINGS

2.66 CTW Emeralds  
1.60 CTW Diamonds  
CE-EH02-YG  
RRP \$19,800



### CLARITY SAPPHIRE HALO EARRINGS

2.58 CTW Sapphires  
0.61 CTW diamonds  
CE-0056-WG  
RRP \$18,000



### CLARITY LOVERS HUGGIES

1.16 CTW  
CE-0050-YG  
RRP \$9,800



### CLARITY LOVERS HUGGIES

1.16 CTW  
CE-0050-WG  
RRP \$9,800



### CLARITY LOVERS HUGGIES

1.16 CTW  
CE-0050-RG  
RRP \$9,800

*Carat weights are approximate and may vary slightly from piece to piece, reflecting the artisanal nature of our craftsmanship.*

[info@mindimondny.com](mailto:info@mindimondny.com)

# CLARITY<sub>3</sub> COLLECTION

## *Earrings*

---



### CLARITY MEGA TAPERED BAGUETTE

5.15 CTW  
CE-0046-YG  
RRP \$42,000



### CLARITY MEGA TAPERED BAGUETTE

5.15 CTW  
CE-0046-WG  
RRP \$42,000



### CLARITY MEGA TAPERED BAGUETTE

5.15 CTW  
CE-0046-RG  
RRP \$42,000



### CLARITY 3 SIDED DIAMOND DROP EARRINGS

3.80 CTW  
CE-0043-YG  
RRP \$24,000



### CLARITY 3 SIDED DIAMOND DROP EARRINGS

3.80 CTW  
CE-0043-WG  
RRP \$24,000



### CLARITY 3 SIDED DIAMOND DROP EARRINGS

3.80 CTW  
CE-0043-RG  
RRP \$24,000



### CLARITY 3D MEGA HALO DROP EARRINGS

6.55 CTW  
CE-0045-YG  
RRP \$35,000



### CLARITY 3D MEGA HALO DROP EARRINGS

6.55 CTW  
CE-0045-WG  
RRP \$35,000



### CLARITY 3D MEGA HALO DROP EARRINGS

6.55 CTW  
CE-0045-RG  
RRP \$35,000

*Carat weights are approximate and may vary slightly from piece to piece, reflecting the artisanal nature of our craftsmanship.*

[info@mindimondny.com](mailto:info@mindimondny.com)

# CLARITY<sub>3</sub> COLLECTION

## *Earrings*



### CLARITY ASSCHER CUT HOOPS

4.00 CTW  
CE-0040-YG  
RRP \$29,800



### CLARITY ASSCHER CUT HOOPS

4.00 CTW  
CE-0040-WG  
RRP \$29,800



### CLARITY ASSCHER CUT HOOPS

4.00 CTW  
CE-0040-RG  
RRP \$29,800



### ASSCHER CUT CLARITY SAPPHIRE HOOPS

1.80 CTW Sapphires  
2.11 CTW Diamonds  
CE-0041-WG  
RRP \$22,800



### ASSCHER CUT CLARITY EMERALD HOOPS

1.80 CTW Emeralds  
2.11 CTW Diamonds  
CE-0041-YG  
RRP \$22,800



### CLARITY POLISHED GOLD DOORKNOCKERS

4.15 CTW  
CE-0054  
RRP \$34,000



### CLARITY ALL DIAMOND DOORKNOCKERS

13.00 CTW  
CE-0056  
RRP \$60,000

*Carat weights are approximate and may vary slightly from piece to piece, reflecting the artisanal nature of our craftsmanship.*

[info@mindimondny.com](mailto:info@mindimondny.com)

# CLARITY<sub>3</sub> COLLECTION

## *Earrings*

---



### CLARITY HOOPS

3.40 CTW  
CE-0017-YG  
RRP \$26,000



### CLARITY HOOPS

3.40 CTW  
CE-0017-WG  
RRP \$26,000



### CLARITY HOOPS

3.40 CTW  
CE-0017-RG  
RRP \$26,000



### CLARITY INSIDE-OUT DIAMOND HOOPS

4.86 CTW  
CE-0018-YG  
RRP \$32,000



### CLARITY INSIDE-OUT DIAMOND HOOPS

4.86 CTW  
CE-0018-WG  
RRP \$32,000



### CLARITY INSIDE-OUT DIAMOND HOOPS

4.86 CTW  
CE-0018-RG  
RRP \$32,000



### CLARITY EAR CLIMBERS

3.00 CTW  
CE-0006-YG  
RRP \$19,600



### CLARITY EAR CLIMBERS

3.00 CTW  
CE-0006-WG  
RRP \$19,600



### CLARITY EAR CLIMBERS

3.00 CTW  
CE-0006-RG  
RRP \$19,600

*Carat weights are approximate and may vary slightly from piece to piece, reflecting the artisanal nature of our craftsmanship.*

[info@mindimondny.com](mailto:info@mindimondny.com)

# CLARITY<sub>3</sub> COLLECTION

## *Earrings*

---



**CLARITY OVAL  
LINK HOOPS**  
1.59 CTW  
CE-0038-YG  
RRP \$14,800



**CLARITY OVAL  
LINK HOOPS**  
1.59 CTW  
CE-0038-WG  
RRP \$14,800



**CLARITY OVAL  
LINK HOOPS**  
1.59 CTW  
CE-0038-RG  
RRP \$14,800



**CLARITY ALL DIAMOND  
OVAL LINK HOOPS**  
2.09 CTW  
CE-0039-YG  
RRP \$16,900



**CLARITY ALL DIAMOND  
OVAL LINK HOOPS**  
2.09 CTW  
CE-0039-WG  
RRP \$16,900



**CLARITY ALL DIAMOND  
OVAL LINK HOOPS**  
2.09 CTW  
CE-0039-RG  
RRP \$16,900



**CLARITY LATTICE  
MEDALLION DIAMOND  
DROP EARRINGS**  
3.85 CTW  
CE-0051-YG  
RRP \$24,000



**CLARITY LATTICE  
MEDALLION DIAMOND  
DROP EARRINGS**  
3.85 CTW  
CE-0051-WG  
RRP \$24,000



**CLARITY LATTICE  
MEDALLION DIAMOND  
DROP EARRINGS**  
3.85 CTW  
CE-0051-RG  
RRP \$24,000

*Carat weights are approximate and may vary slightly from piece to piece, reflecting the artisanal nature of our craftsmanship.*

[info@mindimondny.com](mailto:info@mindimondny.com)

# CLARITY<sub>3</sub> COLLECTION

## *Earrings*

---



**CLARITY POLISHED  
GOLD ICICLE EARRINGS**

1.60 CTW  
CE-0011-YG  
RRP \$13,600



**CLARITY POLISHED  
GOLD ICICLE EARRINGS**

1.60 CTW  
CE-0011-WG  
RRP \$13,600



**CLARITY POLISHED  
GOLD ICICLE EARRINGS**

1.60 CTW  
CE-0011-RG  
RRP \$13,600



**CLARITY ALL-DIAMOND  
ICICLE EARRINGS**

3.46 CTW  
CE-0012-YG  
RRP \$28,000



**CLARITY ALL-DIAMOND  
ICICLE EARRINGS**

3.46 CTW  
CE-0012-WG  
RRP \$28,000



**CLARITY ALL-DIAMOND  
ICICLE EARRINGS**

3.46 CTW  
CE-0012-RG  
RRP \$28,000



**CLARITY 5 STRAND  
TASSEL EARRINGS**

4.50 CTW  
CE-0009-YG  
RRP \$36,000



**CLARITY 5 STRAND  
TASSEL EARRINGS**

4.50 CTW  
CE-0009-WG  
RRP \$36,000



**CLARITY 5 STRAND  
TASSEL EARRINGS**

4.50 CTW  
CE-0009-RG  
RRP \$36,000

*Carat weights are approximate and may vary slightly from piece to piece, reflecting the artisanal nature of our craftsmanship.*

[info@mindimondny.com](mailto:info@mindimondny.com)

# CLARITY<sub>3</sub> COLLECTION

## *Earrings*

---



**CLARITY LATTICE  
HUGGIE HOOPS**

*2.00 CTW  
CE-0015-YG  
RRP \$15,400*



**CLARITY LATTICE  
HUGGIE HOOPS**

*2.00 CTW  
CE-0015-WG  
RRP \$15,400*



**CLARITY LATTICE  
HUGGIE HOOPS**

*2.00 CTW  
CE-0015-RG  
RRP \$15,400*

*Carat weights are approximate and may vary slightly from piece to piece, reflecting the artisanal nature of our craftsmanship.*

*[info@mindimondny.com](mailto:info@mindimondny.com)*

# CLARITY<sub>3</sub> COLLECTION

## Rings

---



**CLARITY 5 DIMENSIONAL  
DIAMOND RING**

*3.12 CTW  
CR-0043-YG  
RP \$18,000*



**CLARITY 5 DIMENSIONAL  
DIAMOND RING**

*3.12 CTW  
CR-0043-WG  
RRP \$18,000*



**CLARITY 5 DIMENSIONAL  
DIAMOND RING**

*3.12 CTW  
CR-0043-RG  
RRP \$18,000*



**CLARITY 5 SIDED  
HALO DIAMOND RING**

*3.37 CTW  
CR-0042-YG  
RRP \$19,200*



**CLARITY 5 SIDED  
HALO DIAMOND RING**

*3.37 CTW  
CR-0042-WG  
RRP \$19,200*



**CLARITY 5 SIDED  
HALO DIAMOND RING**

*3.37 CTW  
CR-0042-RG  
RRP \$19,200*



**CLARITY SPLIT-SHANK  
HALO RING**

*2.40 CTW  
CR-0019-YG  
RP \$19,140*



**CLARITY SPLIT-SHANK  
HALO RING**

*2.40 CTW  
CR-0019-WG  
RRP \$19,140*



**CLARITY SPLIT-SHANK  
HALO RING**

*2.40 CTW  
CR-0019-RG  
RRP \$19,140*

*Carat weights are approximate and may vary slightly from piece to piece, reflecting the artisanal nature of our craftsmanship.*

*[info@mindimondny.com](mailto:info@mindimondny.com)*

# CLARITY<sub>3</sub> COLLECTION

## Rings



**CLARITY FLOATING  
DIAMOND DOUBLE SHANK  
RING**

*0.95 CTW  
CR-0028-YG  
RRP \$10,800*



**CLARITY FLOATING  
DIAMOND DOUBLE SHANK  
RING**

*0.95 CTW  
CR-0028-WG  
RRP \$8,800*



**CLARITY FLOATING  
DIAMOND DOUBLE SHANK  
RING**

*0.95 CTW  
CR-0028-RG  
RRP \$8,800*



**CLARITY OPEN DUAL  
CUBE RING**

*1.70 CTW  
CR-0021-YG  
RRP \$13,800*



**CLARITY OPEN DUAL  
CUBE RING**

*1.70 CTW  
CR-0021-WG  
RRP \$13,800*



**CLARITY OPEN DUAL  
CUBE RING**

*1.70 CTW  
CR-0021-RG  
RRP \$13,800*



**CLARITY QUAD RING**

*3.17 CTW  
CR-0029-YG  
RRP \$26,400*



**CLARITY QUAD RING**

*3.17 CTW  
CR-0029-WG  
RRP \$26,400*



**CLARITY QUAD RING**

*3.17 CTW  
CR-0029-RG  
RRP \$26,400*

*Carat weights are approximate and may vary slightly from piece to piece, reflecting the artisanal nature of our craftsmanship.*

[info@mindimondny.com](mailto:info@mindimondny.com)

# CLARITY<sub>3</sub> COLLECTION

## Rings

---



**CLARITY GOLD  
FRAMED RING**  
*0.48 CTW*  
*CR-0026-YG*  
*RRP \$6,800*



**CLARITY GOLD  
FRAMED RING**  
*0.48 CTW*  
*CR-0026-WG*  
*RRP \$6,800*



**CLARITY GOLD  
FRAMED RING**  
*0.48 CTW*  
*CR-0026-RG*  
*RRP \$6,800*



**CLARITY LATTICE RING**  
*1.16 CTW*  
*CR-0025-YG*  
*RRP \$13,000*



**CLARITY LATTICE RING**  
*1.16 CTW*  
*CR-0025-WG*  
*RRP \$13,000*



**CLARITY LATTICE RING**  
*1.16 CTW*  
*CR-0025-RG*  
*RRP \$13,000*



**CLARITY CIGAR BAND**  
*1.00 CTW*  
*CR-0020-YG*  
*RRP \$12,000*



**CLARITY CIGAR BAND**  
*1.00 CTW*  
*CR-0020-YG*  
*RRP \$12,000*



**CLARITY CIGAR BAND**  
*1.00 CTW*  
*CR-0020-YG*  
*RRP \$12,000*

*Carat weights are approximate and may vary slightly from piece to piece, reflecting the artisanal nature of our craftsmanship.*

*[info@mindimondny.com](mailto:info@mindimondny.com)*

# CLARITY<sub>3</sub> COLLECTION

## Rings

---



### CLARITY ETERNITY BAND

*CTW varies upon sizing*  
CR-0022-YG  
Price upon request



### CLARITY ETERNITY BAND

*CTW varies upon sizing*  
CR-0022-WG  
Price upon request



### CLARITY ETERNITY BAND

*CTW varies upon sizing*  
CR-0022-RG  
Price upon request



### CLARITY STEP DIAMOND BAND

2.85 CTW  
CR-0047-YG  
RRP \$22,900



### CLARITY STEP DIAMOND BAND

2.85 CTW  
CR-0047-WG  
RRP \$22,900



### CLARITY STEP DIAMOND BAND

2.85 CTW  
CR-0047-RG  
RRP \$22,900



### CLARITY CUBE LINK RING

1.10 CTW  
CR-0040-YG  
RRP \$9,600



### CLARITY CUBE LINK RING

1.10 CTW  
CR-0040-WG  
RRP \$9,600



### CLARITY CUBE LINK RING

1.10 CTW  
CR-0040-RG  
RRP \$9,600

*Carat weights are approximate and may vary slightly from piece to piece, reflecting the artisanal nature of our craftsmanship.*

[info@mindimondny.com](mailto:info@mindimondny.com)

# CLARITY<sub>3</sub> COLLECTION

## *Rings*

---



**CLARITY CUBE  
DIAMOND BAND**

*1.34 CTW  
CR-0023-YG  
RRP \$7,800*



**CLARITY CUBE  
DIAMOND BAND**

*1.34 CTW  
CR-0023-WG  
RRP \$7,800*



**CLARITY CUBE  
DIAMOND BAND**

*1.34 CTW  
CR-0023-RG  
RRP \$7,800*

*Carat weights are approximate and may vary slightly from piece to piece, reflecting the artisanal nature of our craftsmanship.*

*[info@mindimondny.com](mailto:info@mindimondny.com)*

# CLARITY<sub>3</sub> COLLECTION

## Necklaces



**CLARITY GOLD  
FRAMED LINK NECKLACE**

1.05 CTW Diamonds  
CN-0047-YG  
RRP \$18,000



**CLARITY GOLD  
FRAMED LINK NECKLACE**

1.05 CTW Diamonds  
CN-0047-WG  
RRP \$18,000



**CLARITY HALO WIDE  
LINK CUBE NECKLACE**

2.00 CTW Diamonds  
CN-0045-YG  
RRP \$24,900



**CLARITY HALO WIDE  
LINK CUBE NECKLACE**

2.00 CTW Diamonds  
CN-0045-WG  
RRP \$24,900



**CLARITY 3 DIMENSIONAL  
DIAMOND PENDANT**

3.92 CTW Diamonds  
CN-0041-YG  
RRP \$18,400



**CLARITY 3 DIMENSIONAL  
DIAMOND PENDANT**

3.92 CTW Diamonds  
CN-0041-WG  
RRP \$18,400



**CLARITY ALL DIAMOND  
HALO CUBE NECKLACE**

2.40 CTW Diamonds  
CN-0050-YG  
RRP \$28,000



**CLARITY ALL DIAMOND  
HALO CUBE NECKLACE**

2.40 CTW Diamonds  
CN-0050-WG  
RRP \$28,000

*Carat weights are approximate and may vary slightly from piece to piece, reflecting the artisanal nature of our craftsmanship.*

[info@mindimondny.com](mailto:info@mindimondny.com)

# CLARITY<sub>3</sub> COLLECTION

## Necklaces



**CLARITY MEGA  
CUBE PENDANT**  
6.00 CTW  
CN-0040-YG  
RRP \$64,000



**CLARITY MEGA  
CUBE PENDANT**  
6.00 CTW  
CN-0040-WG  
RRP \$64,000



**CLARITY MEGA  
CUBE PENDANT**  
6.00 CTW  
CN-0040-RG  
RRP \$64,000



**TRIPLE CLARITY LINK  
NECKLACE**  
2.05 CTW  
CN-0043-YG  
RRP \$19,900



**TRIPLE CLARITY LINK  
NECKLACE**  
2.05 CTW  
CN-0043-WG  
RRP \$19,900



**CLARITY CUBE  
CHOKER**  
1.05 CTW  
CN-0016-YG  
RRP \$17,800



**CLARITY CUBE  
CHOKER**  
1.05 CTW  
CN-0016-YG  
RRP \$17,800



**CLARITY CRYSTAL  
OCTAGON NECKLACE**  
2.00 CTW  
CN-0049-YG  
RRP \$14,000



**CLARITY CRYSTAL  
OCTAGON NECKLACE**  
2.00 CTW  
CN-0049-WG  
RRP \$14,000

*Carat weights are approximate and may vary slightly from piece to piece, reflecting the artisanal nature of our craftsmanship.*

[info@mindimondny.com](mailto:info@mindimondny.com)

# CLARITY<sub>3</sub> COLLECTION

## Bracelets

---



**CLARITY DUAL  
CUBE HINGED BANGLE**  
2.00 CTW  
CB-0018-YG  
RRP \$22,000



**CLARITY DUAL  
CUBE HINGED BANGLE**  
2.00 CTW  
CB-0018-WG  
RRP \$22,000



**CLARITY DUAL  
CUBE HINGED BANGLE**  
2.00 CTW  
CB-0018-RG  
RRP \$22,000



**CLARITY 3 SECTION  
HINGED BANGLE**  
2.40 CTW  
CB-0009-YG  
RRP \$28,000



**CLARITY 3 SECTION  
HINGED BANGLE**  
2.40 CTW  
CB-0009-WG  
RRP \$28,000



**CLARITY 3 SECTION  
HINGED BANGLE**  
2.40 CTW  
CB-0009-RG  
RRP \$28,000



**CLARITY WIDE  
LATTICE CUFF**  
5.00 CTW  
CB-0012-YG  
RRP \$48,000



**CLARITY WIDE  
LATTICE CUFF**  
5.00 CTW  
CB-0012-WG  
RRP \$48,000



**CLARITY WIDE  
LATTICE CUFF**  
5.00 CTW  
CB-0012-RG  
RRP \$48,000

*Carat weights are approximate and may vary slightly from piece to piece, reflecting the artisanal nature of our craftsmanship.*

[info@mindimondny.com](mailto:info@mindimondny.com)

# CLARITY<sub>3</sub> COLLECTION

## Bracelets

---



**CLARITY 5 CUBE  
LINK BANGLE**  
*3.80 CTW*  
*CB-0015-YG*  
*RRP \$32,000*



**CLARITY 5 CUBE  
LINK BANGLE**  
*3.80 CTW*  
*CB-0015-WG*  
*RRP \$32,000*



**CLARITY 5 CUBE  
LINK BANGLE**  
*3.80 CTW*  
*CB-0015-RG*  
*RRP \$32,000*



**CLARITY DIAMOND  
HALO BANGLE**  
*2.00 CTW*  
*CB-0017-YG*  
*RRP \$16,500*



**CLARITY DIAMOND  
HALO BANGLE**  
*2.00 CTW*  
*CB-0017-WG*  
*RRP \$16,500*



**CLARITY DIAMOND  
HALO BANGLE**  
*2.00 CTW*  
*CB-0017-RG*  
*RRP \$16,500*



**CLARITY GEMSTONE  
HALO BANGLE**  
*1.09 CTW Diamonds*  
*0.86 CTW Emeralds*  
*CB-0014-YG*  
*RPP \$15,600*



**CLARITY GEMSTONE  
HALO BANGLE**  
*1.09 CTW Diamonds*  
*0.86 CTW Sapphires*  
*CB-0014-WG*  
*RPP \$15,600*

*Carat weights are approximate and may vary slightly from piece to piece, reflecting the artisanal nature of our craftsmanship.*

[info@mindimondny.com](mailto:info@mindimondny.com)



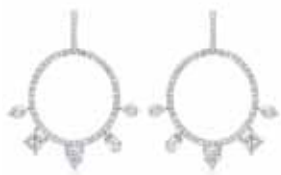
## ICON COLLECTION

*Mindi Mond New York's ICON collection represents a spirited celebration of the finest coloured gemstones. These pieces honour the timeless beauty of rare and vivid gems, meticulously arranged in sculptural silhouettes inspired by urban architecture and Art Deco design.*

# ICON COLLECTION

## *Earrings*

---



### FANCY CUT GYPSY HOOP EARRINGS

5.75 CTW  
CE-0021  
RRP \$34,500



### FIBONACCI MARQUISE EARRINGS

3.30 CTW  
CE-0023  
RRP \$28,000



### FIRE & ICE DIAMOND DROP EARRINGS

4.55 CTW  
E-0100  
RRP \$34,000



### GOLD DIAMOND SPOKE EARRINGS

4.75 CTW  
E-0075-YG  
RRP \$34,000



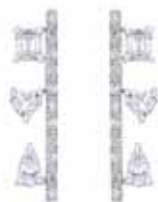
### PEARL DIAMOND SPOKE EARRINGS

4.75 CTW  
E-0075-WG  
RRP \$34,000



### FRESHWATER DIAMOND CLAW EARRINGS

5.50 CTW  
E-0059  
RRP \$39,000



### FANCY CUT BAR EARRINGS

1.72 CTW  
CE-0020  
RRP \$14,800



### FANCY CUT DANGLING EARRINGS

2.77 CTW  
CE-0019  
RRP \$22,000



### FANCY CUT CHAIN DIAMOND MISMATCHED EARRINGS

1.60 CTW  
CE-0024  
RRP \$8,200

*Carat weights are approximate and may vary slightly from piece to piece, reflecting the artisanal nature of our craftsmanship.*

[info@mindimondny.com](mailto:info@mindimondny.com)

# ICON COLLECTION

## *Earrings*

---



**TURTLE BACK PAVE  
STUD EARRINGS**

2.00 CTW  
IE-0036-YG  
RRP \$12,000



**TURTLE BACK PAVE  
STUD EARRINGS**

2.00 CTW  
IE-0036-WG  
RRP \$12,000



**DRIPPING DIAMOND  
EARRINGS**

7.55 CTW  
E-0066  
RRP \$48,000



**FANCY CUT CLUSTER  
STUD EARRINGS**

0.94 CTW  
CE-0022  
RRP \$5,600



**EMERALD CLUSTER  
MARQUIS STUDS**

5.88 CTW Emeralds &  
1.0 CTW Diamonds  
IE-0034  
RRP \$28,000



**EMERALD & FRENCH CUT  
DIAMOND SHERI DROPS**

19.50 CTW Emeralds & 2.15 CTW  
Diamonds  
ICE-020  
Price upon request



**COLOMBIAN EMERALD  
DROP & STUD EARRINGS**

9.13 CTW Emeralds  
E-0015  
RRP \$56,000



**FLOATING DROP EMERALD  
EARRINGS**

6.50 CTW Emeralds  
1.20 CTW Diamonds  
ICE-023-E  
Price upon request



**FLOATING DROP SAPPHIRE  
EARRINGS**

6.50 CTW Sapphires  
1.20 CTW Diamonds  
ICE-023-S  
Price upon request

*Carat weights are approximate and may vary slightly from piece to piece, reflecting the artisanal nature of our craftsmanship.*

[info@mindimondny.com](mailto:info@mindimondny.com)

# ICON COLLECTION

## *Earrings*

---



**FRENCHIE CHANDELIER  
EARRINGS**

*4.60 CTW*

*E-0110*

*Price upon request*

*Carat weights are approximate and may vary slightly from piece to piece, reflecting the artisanal nature of our craftsmanship.*

*[info@mindimondny.com](mailto:info@mindimondny.com)*

# ICON COLLECTION

## *Rings*

---



**FANCY CUT FIVE  
STONE RING**  
*1.78 CTW*  
*CR-0031-YG*  
*RRP \$15,600*



**FANCY CUT FIVE  
STONE RING**  
*1.78 CTW*  
*CR-0031-WG*  
*RRP \$15,600*



**FANCY CUT FIVE  
STONE RING**  
*1.78 CTW*  
*CR-0031-RG*  
*RRP \$15,600*



**FANCY CUT  
CIGAR BAND**  
*0.56 CTW*  
*CR-0030YG*  
*RRP \$8,800*



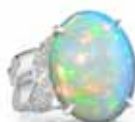
**SIDE PEAR  
RUBELLITE RING**  
*19.23 CTW Rubellites*  
*2.16 CTW Diamonds*  
*ICR-200*  
*RRP \$39,600*



**KISSING RUBELLITE RING**  
*23.17 CTW Rubellites*  
*3.36 CTW Diamonds*  
*IR-0045*  
*RRP \$58,000*



**RUBELLITE & DIAMOND  
LINK RING**  
*22.69 CTW Rubellite*  
*0.70 CTW Diamonds*  
*R-0051*  
*RRP \$29,800*



**OPAL & DIAMOND  
LINK RING**  
*23.00 CTW Opal*  
*0.70 CTW Diamonds*  
*IR-0090*  
*RRP \$26,000*



**AQUAMARINE & DIAMOND  
LINK RING**  
*35.45 CTW Aquamarine*  
*1.00 CTW Diamonds*  
*IR-0048*  
*RRP \$36,500*

*Carat weights are approximate and may vary slightly from piece to piece, reflecting the artisanal nature of our craftsmanship.*

*[info@mindimondny.com](mailto:info@mindimondny.com)*

# ICON COLLECTION

## Rings

---



### EMERALD & DIAMOND LINK RING

21.46 CTW Emerald  
0.70 CTW Diamonds  
R-0053-YG  
Price upon request



### SOUTH SEA BAROQUE PEARL DIAMOND RING

1.25 CTW  
R-0031  
RRP \$15,800



### TRIPLE STEP COLOMBIAN EMERALD RING

5.27 CTW Emerald &  
3.00 CTW Diamonds  
IC-203  
Price upon request



### COLOMBIAN EMERALD SHIELD & FRENCH CUT DIAMOND RING

4.76 CTW Emeralds  
1.05 CTW Diamonds  
IR-0048-YG  
RRP \$68,000



### BAGUETTE DIAMOND & COLOMBIAN EMERALD CITY BAND

1.08 CTW Emeralds  
0.97 CTW Diamonds  
IR-0057  
RRP \$14,500



### COLOMBIAN EMERALD TAPERED BAGUETTE POINTER RING

3.00 CTW Emeralds  
2.30 CTW Diamonds  
IR-0044  
Price upon request



### EMERALD CITY RING

1.40 CTW Emeralds  
2.50 CTW Diamonds  
ICR-205  
RRP \$29,600



### ALL DIAMOND EMPIRE RING

2.00 CTW Diamonds  
IR-0047  
RRP \$16,000



### MOSAIC PLATINUM DIAMOND & SAPPHIRE RING

0.65 CTW Sapphires  
3.22 CTW Diamonds  
IR-0227  
Price upon request

*Carat weights are approximate and may vary slightly from piece to piece, reflecting the artisanal nature of our craftsmanship.*

[info@mindimondny.com](mailto:info@mindimondny.com)

# ICON COLLECTION

## Necklaces



### DRIPPING DIAMONDS NECKLACE

7.18 CTW Diamonds  
N-0056  
RRP \$34,000



### GOLD BALL SPOKE NECKLACE

2.53 CTW Diamonds  
N-0116  
RRP \$16,000



### DIAMOND PEARL SPOKE NECKLACE

2.63 CTW Diamonds  
N-0088  
RRP \$18,000



### COLOMBIAN EMERALD DROP TINSEL CHAIN NECKLACE

2.15 CTW Colombian Emeralds  
IN-0145-YG  
RRP \$12,200



### COLOMBIAN EMERALD DROP TINSEL CHAIN NECKLACE

2.75 CTW Colombian Emeralds  
IN-0143-YG  
RRP \$13,000



### CEYLON SAPPHIRE AND DIAMOND TINSEL DROP CHAIN NECKLACE

3.0 CTW Sapphires  
0.64 CTW Diamonds  
IN-0156-YG  
RRP \$11,500



### CEYLON SAPPHIRE AND DIAMOND TINSEL DROP CHAIN NECKLACE

3.0 CTW Sapphires  
1.28 CTW Diamonds  
IN-0157-YG  
RRP \$14,600



### RUBY 5 DROP TINSEL CHAIN NECKLACE

2.81 CTW Burma Rubies  
IN-0124-YG  
RRP \$8,500



### RUBY 5 DROP TINSEL CHAIN NECKLACE

3.58 CTW Burma Rubies  
IN-0125-YG  
RRP \$9,750

Carat weights are approximate and may vary slightly from piece to piece, reflecting the artisanal nature of our craftsmanship.

[info@mindimondny.com](mailto:info@mindimondny.com)

# ICON COLLECTION

## Necklaces



### FANCY CUT NECKLACE

1.80 CTW Diamonds

CN-0024

RRP \$14,000



### ALL DIAMOND BEZEL-SET CHAIN

11.00 CTW Diamonds

N-0145

RRP \$32,000



### EMERALD & DIAMOND JOAILLERIE PENDANT

21.43 CTW Emeralds

2.45 CTW Diamonds

RN-0164

RRP \$89,200



### EMERALD & FRENCH CUT DIAMOND SOPHIA PENDANT

15.26 CTW Emeralds

1.69 CTW Diamonds

IN-0131

RRP \$89,600



### EMERALD DIAMOND TRAPEZOID NECKLACE

1.23 CTW Emerald

1.25 CTW Diamonds

IN-0128

RRP \$11,000



### STEP CUT EMERALD & DIAMOND DRIPPING PENDANT

6.00 CTW Emerald

N-0097

Price upon request



### DYNAMIC DUO EMERALD NECKLACE

19.20 CTW Emeralds

0.60 CTW Diamonds

ICN-011

RRP \$84,000



### RUBY AND RUBELLITE DIAMOND BY THE YARD NECKLACE

5.74 CTW Rubellite, 1.15  
CTW Diamonds, 0.75 CTW Rubies

ICN-012

RRP \$17,000



### PINK TOURMALINE & DIAMOND PENDANT NECKLACE

6.30 CTW Tourmaline

0.90 CTW Diamonds

N-0158

RRP \$14,000

Carat weights are approximate and may vary slightly from piece to piece, reflecting the artisanal nature of our craftsmanship.

[info@mindimondny.com](mailto:info@mindimondny.com)

# ICON COLLECTION

## *Necklaces*



**ROUND BRILLIANT  
SAPPHIRE PENDANT  
NECKLACE**

*2.12 CTW Ceylon Blue Sapphire*

*IN-0121*

*RRP \$16,000*

*Carat weights are approximate and may vary slightly from piece to piece, reflecting the artisanal nature of our craftsmanship.*

*[info@mindimondny.com](mailto:info@mindimondny.com)*

# ICON COLLECTION

## *Bracelets*

---



### **FANCY CUT BRACELET**

*2.35 CTW Diamonds*

*CB-0013*

*RRP \$17,800*



### **DIAMOND LOVERS LINE BRACELET**

*12.83 CTW Diamonds*

*IB-0004*

*RRP \$58,000*



### **ICONIC DIAMOND LINE BRACELET**

*24.00 CTW Diamonds*

*IB-0007*

*Price upon request*



### **ICONIC DIAMOND BRACELET**

*36.00 CTW Diamonds*

*IB-0010*

*Price upon request*



### **PEARL DIAMOND SPOKE BRACELET**

*2.45 CTW*

*B-0019*

*RRP \$26,000*

*Carat weights are approximate and may vary slightly from piece to piece, reflecting the artisanal nature of our craftsmanship.*

*[info@mindimondny.com](mailto:info@mindimondny.com)*



## RECONCEIVED COLLECTION

*The RECONCEIVED collection represents a high-end ode to Mindi Mond New York's origin story, and the lovingly reimaged antique jewelry that started it all.*

*Expertly crafted from a selection of period and estate jewelry, these extraordinary statement jewels effortlessly combine the glamor of a bygone era with a thoroughly modern design sensibility.*

# RECONCEIVED COLLECTION

## *Earrings*

---



### **OLD MINE CLUSTER EARRINGS**

*5.70 CTW  
E-0035  
RRP \$34,000*



### **PLATINUM DIAMOND WING EARCLIP EARRINGS**

*16.00 CTW  
E-0076  
RRP 45,600*



### **FRENCH ÉCLAT DROP EARRINGS**

*3.50 CTW  
IE-0039  
RRP \$26,000*



### **DANGLING DECO SHIELD EARRINGS**

*3.60 CTW  
E-0079  
RRP \$19,800*



### **J'ADORE DIAMOND CHANDELIER EARRINGS**

*5.10 CTW  
IE-0040  
RRP \$36,000*



### **OLD EUROPEAN TEAR DROP EARRINGS**

*3.00 CTW  
RE-0046  
RRP \$24,000*



### **MEGA GALAXY EARRINGS**

*12.00 CTW  
RE-0015  
RRP \$42,000*



### **HAUTE JOAILLERIE DIAMOND CHANDELIER EARRINGS**

*7.00 CTW  
RE-0034  
RRP \$74,000*



### **DECO GALA PEARL & DIAMOND CHANDELIER**

*6.00 CTW  
RE-0102  
RRP \$48,000*

*Select pieces feature original vintage components that reflect the design aesthetics and craftsmanship of their era. Variations in gemstone color, natural inclusions, and lower metal purity are characteristic of these older materials. Carat weights are approximate, as Mindi Mond New York preserves the integrity of each piece by keeping stones in their original settings.*

*info@mindimondny.com*

# RECONCEIVED COLLECTION

## *Earrings*



### DIAMOND & MOONSTONE GALA CHANDELIERS

13.00 CTW Moonstone &  
10.50 CTW Diamonds  
E-0077  
RRP \$38,000



### DECO AQUA & DIAMOND PENDANT EARRINGS

6.58 CTW Aquamarines &  
5.00 CTW Diamonds  
E-0097  
RRP \$29,600



### BROKEN ARROW PENDANT EARRINGS

2.35 CTW Rubies,  
1.80 CTW Blue Sapphires & 1.80  
CTW Diamonds  
RE-0096  
RRP \$29,800



### MILGRAIN DIAMOND LINE DETACHABLE SAPPHIRE EARRINGS

6.52 CTW Diamonds &  
6.62 CTW Sapphires  
RE-0100  
RRP \$84,000



### COLOMBIAN EMERALD AND OLD EUROPEAN LINE EARRINGS

6.55 CTW Emeralds  
5.00 CTW Diamonds  
RE-0048  
RRP \$64,000



### PINK TOURMALINE AND MULTI- CUT DECO DIAMOND DANGLE EARRINGS

14.78 CTW Tourmalines & 3.30 CTW  
Diamonds  
RE-0043  
RRP \$26,000



### EMERALD & DIAMOND MISMATCH DETACHABLE EARRINGS

1.20 CTW Emerald &  
4.25 CTW Diamonds  
E-0099  
RRP \$34,000



### CELESTIAL DIAMOND AND GREEN TOURMALINE DETACHABLE EARRINGS

16.2 CTW Green Tourmalines, 9.75  
CTW Diamonds  
RE-0103  
RRP \$64,000



### DECO ELONGATED DROP EARRINGS

1.20 CTW Emeralds &  
3.89 CTW Diamonds  
IE-0029  
RRP \$32,000

*Select pieces feature original vintage components that reflect the design aesthetics and craftsmanship of their era. Variations in gemstone color, natural inclusions, and lower metal purity are characteristic of these older materials. Carat weights are approximate, as Mindi Mond New York preserves the integrity of each piece by keeping stones in their original settings.*

[info@mindimondny.com](mailto:info@mindimondny.com)

# RECONCEIVED COLLECTION

## *Earrings*



### **TOWERING STEP EMERALD CHANDELIER EARRINGS**

*5.50 CTW Emeralds &  
2.10 CTW Diamonds  
IE-0028*

*RRP \$44,000*



### **EMERALD SHOULDER DUSTER BESPOKE EARRINGS**

*10.95 CTW Emeralds &  
6.16 CTW Diamonds*

*RE-0035  
RRP \$88,000*



### **EMERALD DIAMOND SPADE DANGLE EARRINGS**

*4.00 CTW Emeralds,  
0.52 CTW Black Diamonds & 1.60  
CTW Diamonds*

*E-0108  
RRP \$28,600*



### **FRENCH CUT DIAMOND JADITE EAR PENDANTS**

*6.10 CTW Diamonds  
RE-0107*

*RRP \$48,000*



### **GEOMETRIC ONYX RUBELLITE EAR DUSTERS**

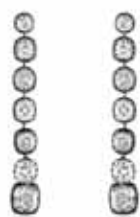
*15.50 CTW Rubellite &  
5.00 CTW Diamonds*

*E-0104  
RRP \$78,000*



### **FLORAL DANGLING STUD EARRINGS**

*0.75 CTW  
RE-0042  
RRP \$3,600*



### **CUSHION CUT DIAMOND LINE EARRINGS**

*14.00 CTW  
RE-0038  
RRP \$98,000*



### **DIAMOND TRILLION EARRINGS**

*12.00 CTW  
E-0079  
RRP \$38,000*



### **PEARL & DIAMOND SINGLE DROP EARRING**

*3.00 CTW  
RE-0098  
RRP \$12,000*

*Select pieces feature original vintage components that reflect the design aesthetics and craftsmanship of their era. Variations in gemstone color, natural inclusions, and lower metal purity are characteristic of these older materials. Carat weights are approximate, as Mindi Mond New York preserves the integrity of each piece by keeping stones in their original settings.*

*info@mindimondny.com*

# RECONCEIVED COLLECTION

## *Earrings*



**OLD CUSHION DANGLE  
SINGLE EARRING**

*1.78 CTW*

*E-0016*

*RRP \$7,200*

*Select pieces feature original vintage components that reflect the design aesthetics and craftsmanship of their era. Variations in gemstone color, natural inclusions, and lower metal purity are characteristic of these older materials. Carat weights are approximate, as Mindi Mond New York preserves the integrity of each piece by keeping stones in their original settings.*

*[info@mindimondny.com](mailto:info@mindimondny.com)*

# RECONCEIVED COLLECTION

## Rings

---



**PLATINUM DIAMOND  
BAR RING**  
6.12 CTW  
R-0035  
RRP \$34,000



**TWO FINGER BOW RING**  
4.00 CTW  
R-0008  
RRP \$12,800



**OLD CUT ICONIC  
DOME RING**  
10.87 CTW  
IC-201  
RRP \$44,000



**DIAMOND & SAPPHIRE  
OLD CUT RING**  
1.50 CTW Sapphires &  
4.10 CTW Diamonds  
R-0036  
RRP \$24,000



**GEM OCTAGONAL  
AQUAMARINE RING**  
7.61 CTW Aquamarine &  
2.60 CTW Diamonds  
RR-AQ042  
RRP \$40,000



**OVAL SAPPHIRE  
JOAILLERIE RING**  
8.29 CTW Sapphire &  
6.79 CTW Diamonds  
ICR-204  
Price upon request



**PLATINUM FILIGREE  
EMERALD & DIAMOND  
DINNER RING**  
0.25 CTW Emeralds  
2.80 CTW Diamonds  
R-0041  
RRP \$24,000



**EMERALD & FRENCH CUT  
DIAMOND STEP RING**  
2.00 CTW Emeralds  
3.80 CTW Diamonds  
IR-0051  
RRP \$32,000



**EMERALD SHIELD  
DIAMOND RING**  
6.06 CTW Emeralds  
2.80 CTW Diamonds  
R-0034  
Price upon request

Select pieces feature original vintage components that reflect the design aesthetics and craftsmanship of their era. Variations in gemstone color, natural inclusions, and lower metal purity are characteristic of these older materials. Carat weights are approximate, as Mindi Mond New York preserves the integrity of each piece by keeping stones in their original settings.

[info@mindimondny.com](mailto:info@mindimondny.com)

# RECONCEIVED COLLECTION

## Necklaces



### DIAMOND AND SAPPHIRE BAR NECKLACE

3.75 CTW Diamonds  
2.35 CTW Sapphires  
RN-0181  
RRP \$28,000



### PEARL DIAMOND BAR NECKLACE

3.80 CTW Diamonds  
Cultured Pearls  
RN-0189  
RRP \$32,000



### OLD EUROPEAN DIAMOND BAR NECKLACE

9.00 CTW Diamonds  
RN-0197  
RRP \$48,000



### RUBY & DIAMOND CRISS CROSS BAR PENDANT NECKLACE

3.15 CTW Rubies  
0.42 CTW Diamonds  
N-0093  
RRP \$11,200



### COLOMBIAN EMERALD BAR NECKLACE

0.75 CTW Emeralds  
2.00 CTW Diamonds  
N-0101  
RRP \$22,800



### TIFFANY & CO. FRENCH CUT DIAMOND BAR NECKLACE

1.20 CTW Emeralds  
2.90 CTW Diamonds  
N-0109  
RRP \$24,000



### DOUBLE FLOATING DIAMOND PENDANT NECKLACE

4.60 CTW  
N-0102  
RRP \$24,800



### OLD CUSHION CUT DIAMOND SWINGING NECKLACE

10.00 CTW  
N-0089  
RRP \$50,000



### DIAMOND PLATINUM ADJUSTABLE CHOKER

16.20 CTW Diamonds  
N-0680  
Price upon request

Select pieces feature original vintage components that reflect the design aesthetics and craftsmanship of their era. Variations in gemstone color, natural inclusions, and lower metal purity are characteristic of these older materials. Carat weights are approximate, as Mindi Mond New York preserves the integrity of each piece by keeping stones in their original settings.

[info@mindimondny.com](mailto:info@mindimondny.com)

# RECONCEIVED COLLECTION

## Necklaces



### FABERGE DROP NECKLACE

3.60 CTW  
N-0108  
RRP \$22,000



### DIAMOND AND COLOMBIAN EMERALD KEY PENDANT

2.26 CTW Emeralds &  
12.30 CTW Diamonds  
RN-0167  
RRP \$81,150



### DIAMOND CLUSTER SPRAY MEDALLION PENDANT

13.18 CTW  
RN-0178  
RRP \$97,000



### COLOMBIAN GEM EMERALD DIAMOND PENDANT

2.31 CTW Emeralds  
RN-0173  
RRP \$64,000



### SAPPHIRE DIAMOND LARGE DECO MEDALLION

3.78 CTW Sapphires &  
7.45 CTW Diamonds  
RN-0168  
RRP \$92,000



### RUBY DIAMOND MEDALLION

3.78 CTW Rubies &  
5.48 CTW Diamonds  
RN-0177  
RRP \$47,200



### TUTTI FRUTTI GEM PENDANT

1.38 CTW Assorted Gemstones &  
12.23 CTW Diamonds  
RN-0162  
RRP \$39,400



### DIAMOND CRYSTAL SHAKER MEDALLION PENDANT

11.50 CTW  
RN-0171  
RRP \$48,800



### MALACHITE DIAMOND LONG PENDANT

1.85 CTW Diamonds  
RN-0195  
RRP \$28,000

Select pieces feature original vintage components that reflect the design aesthetics and craftsmanship of their era. Variations in gemstone color, natural inclusions, and lower metal purity are characteristic of these older materials. Carat weights are approximate, as Mindi Mond New York preserves the integrity of each piece by keeping stones in their original settings.

[info@mindimondny.com](mailto:info@mindimondny.com)

# RECONCEIVED COLLECTION

## *Brooches*

---



**CELESTIAL CONVERTIBLE  
DIAMOND AND SAPPHIRE  
BROOCH**

*3.80 CTW Sapphires &  
8.00 CTW Diamonds  
RP-0004  
RRP \$48,000*



**DIAMOND WING BROOCH**

*5.00 CTW Diamonds  
RP-0002  
RRP \$16,950*



**COLOMBIAN EMERALD  
TWIN STICK PINS**

*6.50 CTW Emerald  
3.50 CTW Diamonds  
RP-0003  
RRP \$64,000*

*Select pieces feature original vintage components that reflect the design aesthetics and craftsmanship of their era. Variations in gemstone color, natural inclusions, and lower metal purity are characteristic of these older materials. Carat weights are approximate, as Mindi Mond New York preserves the integrity of each piece by keeping stones in their original settings.*

*[info@mindimondny.com](mailto:info@mindimondny.com)*



**HUES BY MINDI MOND COLLECTION**

*The HUES BY MINDI MOND collection*

# HUES BY MINDI MOND COLLECTION

## *Earrings*

---



### **PARAIBA TOURMALINE EARRINGS**

109.7 CTW Paraiba Tourmalines  
1.72 CTW Diamonds  
IE-0031  
Price upon request



### **BI-COLOR WATERMELON TOURMALINE EARRINGS**

55.67 CTW Watermelon Tourmalines  
7.01 CTW Diamonds  
IE-0037-YG  
RRP \$92,000



### **EMERALD DIAMOND ICON DROP EARRINGS**

31.29 CTW Emeralds  
1.60 CTW Diamonds  
ICE-021  
Price upon request



### **INFINITY OPAL EARRINGS**

22.35 CTW Fire Opals, 19.5  
CTW Opal, 2.12 CTW Diamonds  
HE-0008  
RRP \$34,000



### **RUBELLITE DIAMOND SPIRAL EARRINGS**

19.37 CTW Rubellites  
2.22 CTW Diamonds  
IE-0038-YG  
RRP \$38,600



### **WEeping WILLOW INDICOLITE EARRINGS**

25 CTW Indicolite  
3.80 CTW Diamonds  
HE-0009  
RRP \$48,000



### **COLLET SET AMETHYST DIAMOND DROP EARRINGS**

32 CTW Amethysts  
1.60 CTW Diamonds  
RE-AM036  
RRP \$17,000



### **IMPERIAL AMETHYST DIAMOND DROP EARRINGS**

31 CTW Amethysts  
1.20 CTW Diamonds  
HE-0002  
RRP \$19,000



### **IMPERIAL CITRINE DIAMOND DROP EARRINGS**

31 CTW Citrines  
1.20 CTW Diamonds  
HE-0001  
RRP \$19,000

*Select pieces feature original vintage components that reflect the design aesthetics and craftsmanship of their era. Variations in gemstone color, natural inclusions, and lower metal purity are characteristic of these older materials. Carat weights are approximate, as Mindi Mond New York preserves the integrity of each piece by keeping stones in their original settings.*

[info@mindimondny.com](mailto:info@mindimondny.com)

# HUES BY MINDI MOND COLLECTION

## *Earrings*

---



**MEGA FLOATING ALL  
DIAMOND DROPS**

*3.37 CTW  
HE-0011-YG  
RRP \$29,900*



**MEGA FLOATING ALL  
DIAMOND DROPS**

*3.37 CTW  
HE-0011-WG  
RRP \$29,900*



**MEGA FLOATING ALL  
DIAMOND DROPS**

*3.37 CTW  
HE-0011-RG  
RRP \$29,900*



**FLOATING ALL  
DIAMOND DROPS**

*2.28 CTW  
HE-0010-YG  
RRP \$24,800*



**FLOATING ALL  
DIAMOND DROPS**

*2.28 CTW  
HE-0010-YW  
RRP \$24,800*



**FLOATING ALL  
DIAMOND DROPS**

*2.28 CTW  
HE-0010-RG  
RRP \$24,800*



**FLOATING AQUAMARINE  
AND DIAMOND DROP  
EARRINGS**

*13.50 CTW Aquamarines  
0.61 CTW Diamonds  
HE-0005  
RRP \$22,800*



**FLOATING PERIDOT AND  
DIAMOND DROP EARRING**

*15.50 CTW  
HE-0007  
RRP \$22,000*



**FLOATING RHODOLITE  
GARNET AND DIAMOND  
DROP EARRINGS**

*15.50 CTW  
HE-0006  
RRP \$19,500*

*Select pieces feature original vintage components that reflect the design aesthetics and craftsmanship of their era. Variations in gemstone color, natural inclusions, and lower metal purity are characteristic of these older materials. Carat weights are approximate, as Mindi Mond New York preserves the integrity of each piece by keeping stones in their original settings.*

*[info@mindimondny.com](mailto:info@mindimondny.com)*

# HUES BY MINDI MOND COLLECTION

## *Rings*

---



### **RUBELLITE AND DIAMOND SPIRAL RING**

10 CTW Rubellite &  
2.77 CTW Diamonds  
IR-0225-YG  
RRP \$36,000



### **GREEN TOURMALINE AND DIAMOND SPIRAL RING**

12.04 CTW Green Tourmaline  
2.68 CTW Diamonds  
IR-0226  
RRP \$42,000



### **OPAL & DIAMOND SPIRAL RING**

10 CTW Opal &  
2.20 CTW Diamonds  
IR-0228-YG  
RRP \$28,000



### **FLOATING ALL DIAMOND RING**

2.20 CTW  
HR-0009-YG  
RRP \$24,800



### **FLOATING ALL DIAMOND RING**

2.20 CTW  
HR-0009-WG  
RRP \$24,800



### **FLOATING ALL DIAMOND RING**

2.20 CTW  
HR-0009-RG  
RRP \$24,800



### **WATERMELON TOURMALINE RING**

31.85 CTW Watermelon  
Tourmalines & 0.60 CTW  
Diamonds  
IR-0050  
RRP \$32,400



### **FLOATING RHODOLITE GARNET RING**

21.46 CTW Rhodolite Garnet &  
0.64 CTW Diamonds  
HR-0001  
RRP \$22,000



### **FLOATING AMETHYST AND DIAMOND RING**

21.46 CTW Amethyst &  
0.64 CTW Diamonds  
HR-0008  
RRP \$22,000

*Select pieces feature original vintage components that reflect the design aesthetics and craftsmanship of their era. Variations in gemstone color, natural inclusions, and lower metal purity are characteristic of these older materials. Carat weights are approximate, as Mindi Mond New York preserves the integrity of each piece by keeping stones in their original settings.*

[info@mindimondny.com](mailto:info@mindimondny.com)

# HUES BY MINDI MOND COLLECTION

## *Rings*

---



### **FLOATING AQUAMARINE AND DIAMOND RING**

*18.91 CTW Aquamarine*

*0.64 CTW Diamonds*

*HR-0007*

*RRP \$24,000*



### **FLOATING CITRINE AND DIAMOND RING**

*21.46 CTW Citrine*

*0.64 CTW Diamonds*

*HR-0006*

*RRP \$22,000*



### **FLOATING PERIDOT AND DIAMOND RING**

*8.00 CTW Peridot*

*0.70 CTW Diamonds*

*HR-0004*

*RRP \$22,000*



### **FLOATING PINK TOURMALINE AND DIAMOND RING**

*8.00 CTW Pink Tourmaline*

*0.70 CTW Diamonds*

*HR-0067*

*RRP \$21,200*



### **FLOATING RHODOLITE GARNET AND DIAMOND RING**

*8.00 CTW Garnet*

*0.70 CTW Diamonds*

*HR-0005*

*RRP \$15,500*

*Select pieces feature original vintage components that reflect the design aesthetics and craftsmanship of their era. Variations in gemstone color, natural inclusions, and lower metal purity are characteristic of these older materials. Carat weights are approximate, as Mindi Mond New York preserves the integrity of each piece by keeping stones in their original settings.*

*[info@mindimondny.com](mailto:info@mindimondny.com)*

# HUES BY MINDI MOND COLLECTION

## Necklaces

---



### AQUAMARINE DIAMOND PENDANT LINK PENDANT

163 CTW Aquamarine &  
1.62 CTW Diamonds  
ICN-011  
RRP \$92,000



### WEEPING WILLOW INDICOLITE NECKLACE

17.74 CTW Indicolite &  
5.45 CTW Diamonds  
HN-0002  
RRP \$49,000



### FLOATING PINK TOURMALINE & DIAMOND NECKLACE

~18.95 CTW Pink Tourmaline  
0.35 CTW Diamonds  
HN-0001  
RRP \$27,200



### FLOATING ALL DIAMOND NECKLACE

4.15 CTW  
HN-0003-YG  
RRP \$36,000



### FLOATING ALL DIAMOND NECKLACE

4.15 CTW  
HN-0003-WG  
RRP \$36,000



### FLOATING ALL DIAMOND NECKLACE

4.15 CTW  
HN-0003-RG  
RRP \$36,000

Select pieces feature original vintage components that reflect the design aesthetics and craftsmanship of their era. Variations in gemstone color, natural inclusions, and lower metal purity are characteristic of these older materials. Carat weights are approximate, as Mindi Mond New York preserves the integrity of each piece by keeping stones in their original settings.

[info@mindimondny.com](mailto:info@mindimondny.com)

Mindi Mond

NEW YORK



WHOLESALE PRODUCTS LINESHEET

*Fall Winter 2025*